



Grazing BMP Project Report

Delivery July 2013 to June 2014

Grazing BMP Project 2013/14

The delivery of Grazing BMP first commenced in 2010, and in January 2013 the Department of Environment and Heritage Protection (DEHP) co-funded a project to deliver Grazing BMP in the two major reef catchments of the Burdekin and Fitzroy. This initiative has been funded by the Queensland Government to support sustainable agriculture and achieve Great Barrier Reef water quality outcomes. Co-investment came from a range of sources, the principle ones were Caring for Country funding and Queensland Government funds through the Department of Agriculture and Fisheries.

Delivery against Project Targets

The following Grazing BMP Project information and data is for the period for 1st July to 30 June 2014 and has been drawn from the Web site data base¹. Performance against project targets is summarized in table I.

Table I Performance against Grazing BMP Delivery Targets 2013/14

	Targets			Delivered		
	Burdekin	Fitzroy	Total	Burdekin	Fitzroy	Total
Total modules completed	500	1000	1,500	538	1251	1789
Soils and GLM completed	200	400	600	215	650	865
Modules delivered as complete program (grazier completing 5)	100	200	300	445	325	770
Businesses undertaking the complete program (5 modules)	20	40	60	89	65	123
Modules completed by Burdekin businesses without ERMP	150	NA	150	270	NA	270
Business audited	10	20	30	5	6*	11

*The audits were conducted in July

¹ It is acknowledged that not all events and authorisation of module completions may not have been entered and approved into the data base at the point of report was generated.

BMP Modules Grazing

Five Grazing BMP modules are delivered in the program:

- Soil Health
- Grazing Land Management
- Animal Production
- Animal Health and Welfare
- People and Business

Industry participants are completing modules by one of three means:

- workshops facilitated by project staff;
- individual producer with one on one facilitator support and
- on-line completion by individual participants.

BMP Participation

In the twelve months there were new 554 businesses enrol in the Grazing BMP program. Whilst delivery is targeted on the focus catchments of the Fitzroy and Burdekin, graziers from across Queensland have completed modules. It must be noted that a business can complete a Grazing BMP which apply to a number of properties. Grazing BMP was completed for 19% of Burdekin grazing properties and 15% of properties in the Fitzroy during the project.

Participants from Southern Gulf, Desert Channels and Burnett-Mary Catchments dominated module completion in the twelve months in the other Queensland Catchments. Of interest is the first NSW grazing business completed all five modules.

Table II Industry Participants and Modules completed July to 2013 June 2014

NRM Region	Propert-ies	Modules					Total
		Soil Health	Grazing Land Management	Animal Production	Animal Health & Welfare	People & Business	
Fitzroy*	470	275	275	302	313	86	1251
Burdekin**	146	107	108	108	114	101	538
Total Fitzroy & Burdekin	616	382	383	410	427	187	1789
Other Qld NRM	60	41	43	31	36	25	176
Totals	676	423	426	441	463	212	1965

*3083 properties (Commercial cattle grazing properties, ABS 2010/11)

**772 properties (Commercial cattle grazing properties, ABS 2010/11)

Figure I Location of the Grazing BMP Participants across the two focus catchments

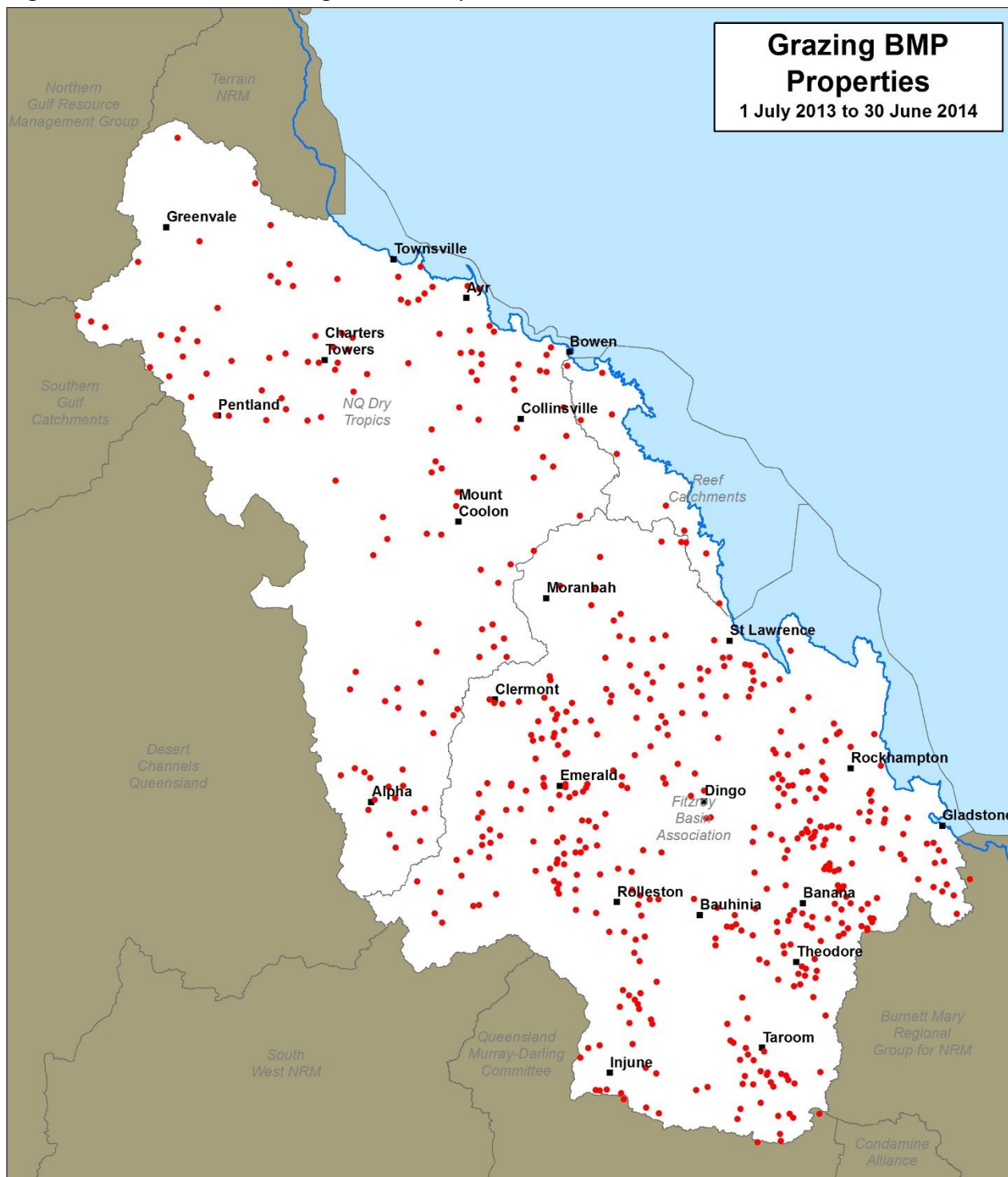


Figure II Property area by module July 2013 to June 2014

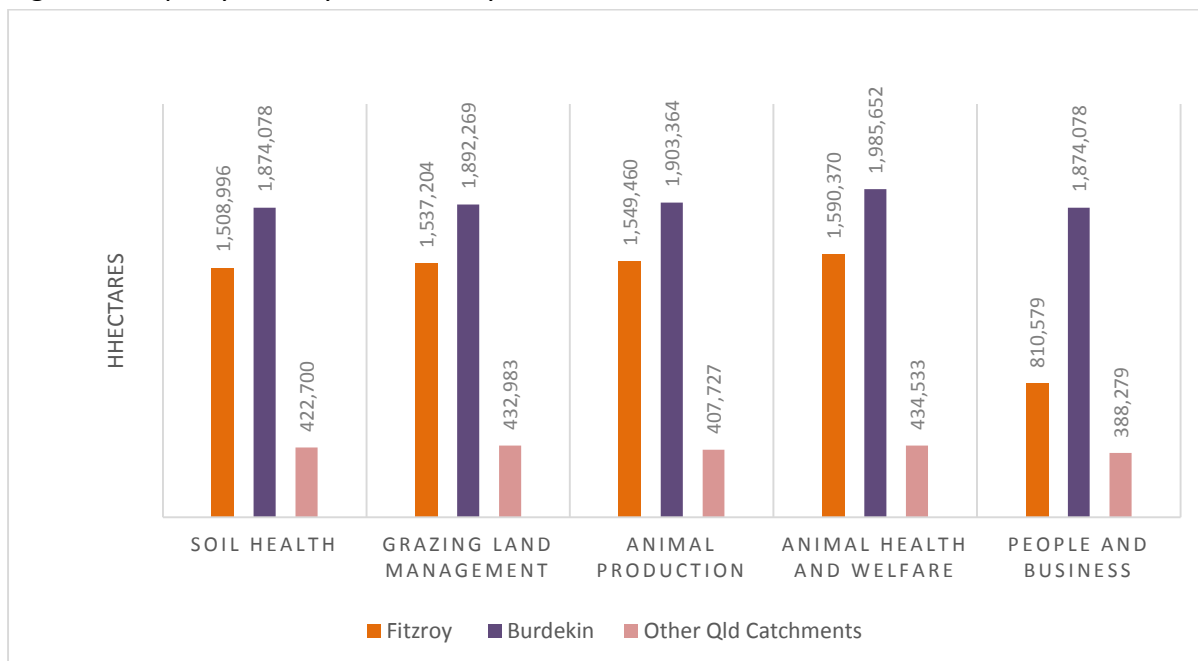


Figure II presents the area of land managed by graziers that have completed a Grazing BMP module. The individual module hectare totals should not be added to present a total area covered by the program. For example a business who has completed five modules have their hectares presented in each of the module totals.

Business Management Practice Standard by Module and Key Activity Area

Industry participants benchmarking their industry practices against the standards set out modules identifying them as: below, at and above industry standard. For some standards there are no above industry standards.

Details of how figures III and IV were generated:

- Number of worksheets available to answer in each module is calculated;
- Each participants and module percentage of Below, At and Above is calculated for each module based on count of practice/count of worksheets available in module];
- Participants that are confirmed by those facilitating the module completions;
 - Worksheets are assumed to have equal rating;
 - Participants are assumed to have equal rating and
 - An average of the percentages for the module is then down on the businesses.

Figure III Business Management Practice Standard by Module

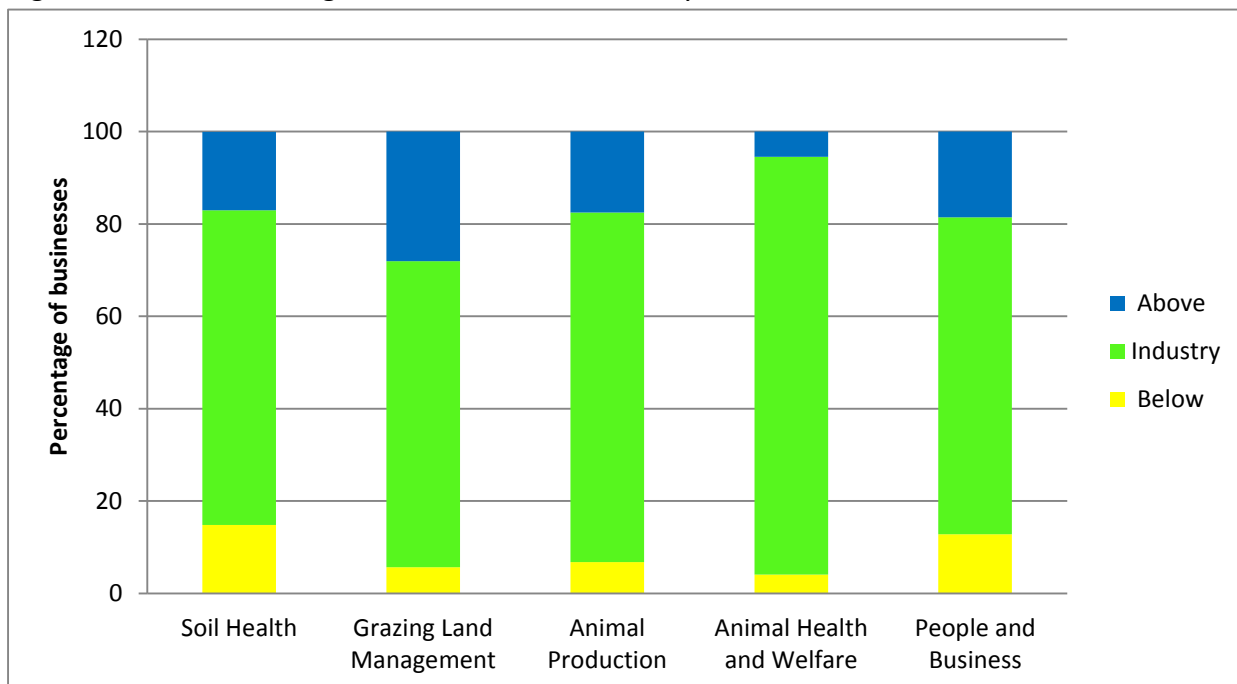
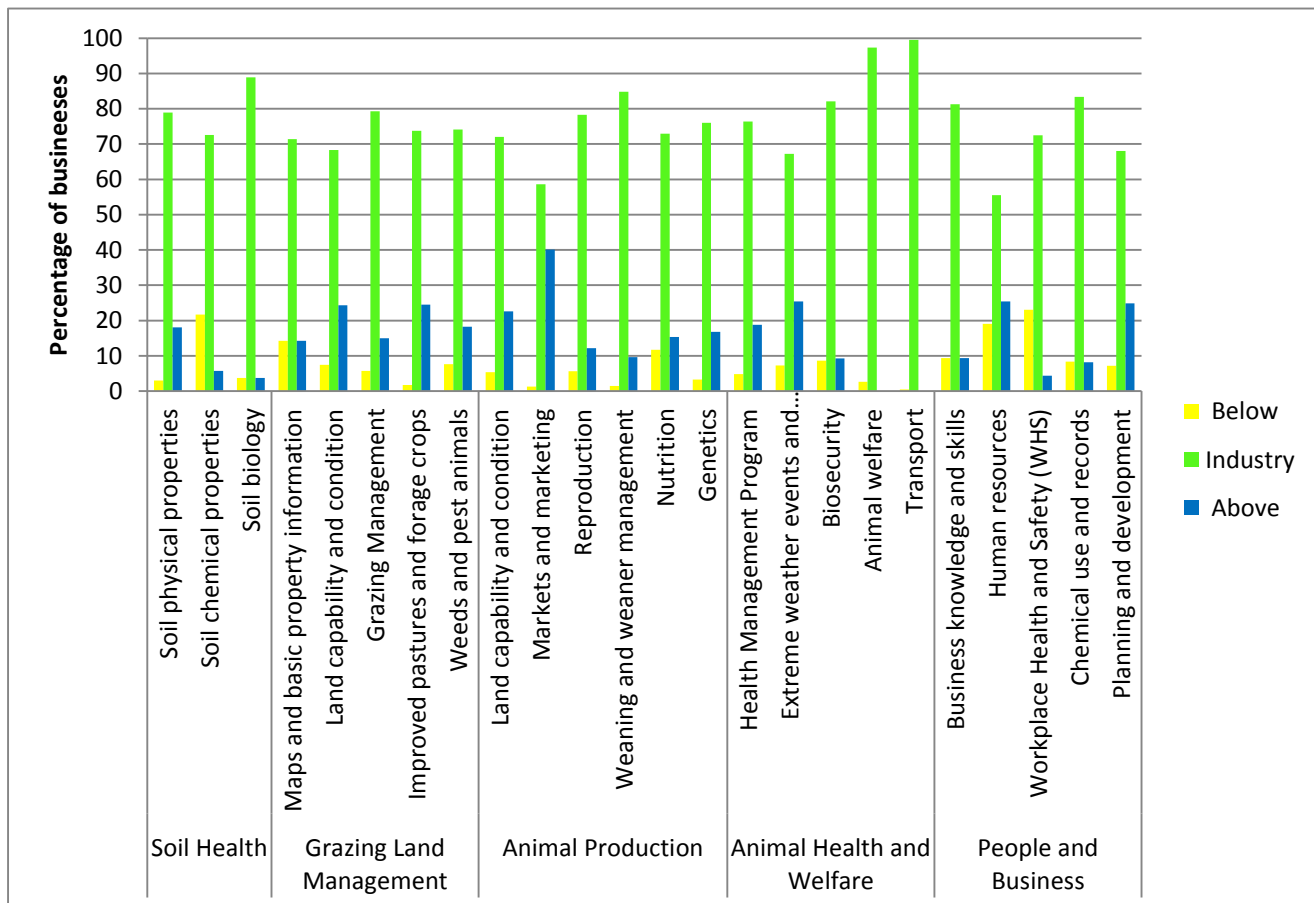


Figure IV Business Management Practice Standard by Key Area



Completion of five Grazing BMP modules and ERMP status

Table IV Businesses who have awarded a *Recognition of Completion* of five modules

Catchment	Businesses completed 5 modules
Burdekin	126
Fitzroy	65
Other Qld	16
NSW	1
Total	209

Upon confirmation that a business has been completed all five Grazing BMP modules the program issues *Recognition of Completion* documentation. In the year 2013/14 the program has issued 209 confirmations. The business's Grazing BMP self-assessment is valid for two years from the date of completion of their last module.

The project had a milestone of 150 modules being completed by Burdekin industry participants who do not hold an ERMP. During the period July to June 2014, 270 modules were completed by Burdekin industry participants without an ERMP. This is an under estimate of the number of modules as the data base has until recently been unable to collect that data and there are a number of producers whose ERMP status is unknown.

Grazing BMP Certification and Audit Assurance Strategy

Another of Grazing BMP project milestones was the development of a certification and audit assurance strategy and completion of pilot audits. Development of the certification and audit assurance strategy was completed and approved in late 2013.

To be eligible audited grazing businesses needed to have completed all five modules. Grazing BMP audits are voluntary, completion was at no cost to the grazing business and the audits were conducted by accredited external auditors. Grazing BMP project officers guided the business in preparation of their documentation against the core audit criteria. Successfully audited grazing businesses achieve the status of *Grazing Best Management Practice Accredited Producer*.

AgForce's Belmont Research Station was audited through the holding of two audit training events. In June 2014 five grazing businesses were audited in the Burdekin and in July five grazing businesses were audited in the Fitzroy. All were successful in obtaining *Grazing BMP Accredited Producer* status.